

TRAVEL PACK

For Students at LNS





Welcome

We have put together this pack to share all the information we think you will need to ensure you or your daughter can get to and from school safely and on time. We thank you for taking the time to read and consider this pack. We encourage you to provide feedback, questions and suggestions by emailing admin@ladynafisa.org

CONTENT



- 01** Drive & Drop
- 02** Park & Pick up
- 03** Park & Stride
- 04** Local Bus Timetable
- 05** Using the train
- 06** Considerate and safe driving and parking



01

Drive & Drop



Parents who want to drop their daughter to school in the car MUST follow these guidelines to ensure safety and reduce the risk of increased congestion in the local area.

The school has staggered start times to reduce congestion. The gates to school open at 8:00am daily, and often times earlier. Your daughter is welcome to come on site when the gates open.

Drivers must drive with care, drop off their daughter and use the staff car park entrance to make a full 360 turn (see diagram).



Parents should not wait in their cars in the staff car park OR in the parking spaces outside school once the school gate is open. This causes congestion and makes it harder for cars to leave the site quickly.

Parents can not drop off students in locations marked with a red cross. This is dangerous and causes unnecessary delays.



**Please ensure bags or backpacks are not left in the boot of the car
as again this will slow things down**

Please ensure children who will be getting out of the car sit on the left hand side, where possible, as this makes it easier for them to get out quickly



02

Park & Pick Up

The school has staggered end times to accommodate for increased congestion in the local area. These guidelines **MUST** be followed to ensure everyone's safety and reduce annoyance to our neighbors.

The school currently has 9 council owned parking spaces in front of the building which are available for parents to use. The staff car park must not be used to allow cars to make a full 360 turn at the entrance.

Once you park, turn off your engine.

Please drive off carefully once your daughter gets to the car. Avoid putting school bags into the boot as this only delays exit.

Parents must not park in the areas marked with a red cross. This will cause delays.



We strongly encourage parents to car pool (car share) to reduce the number of vehicles on the road and free up parking spaces.

If you are able to take additional passengers, please let the office know. We keep a log of car sharers so we can share this information as required.

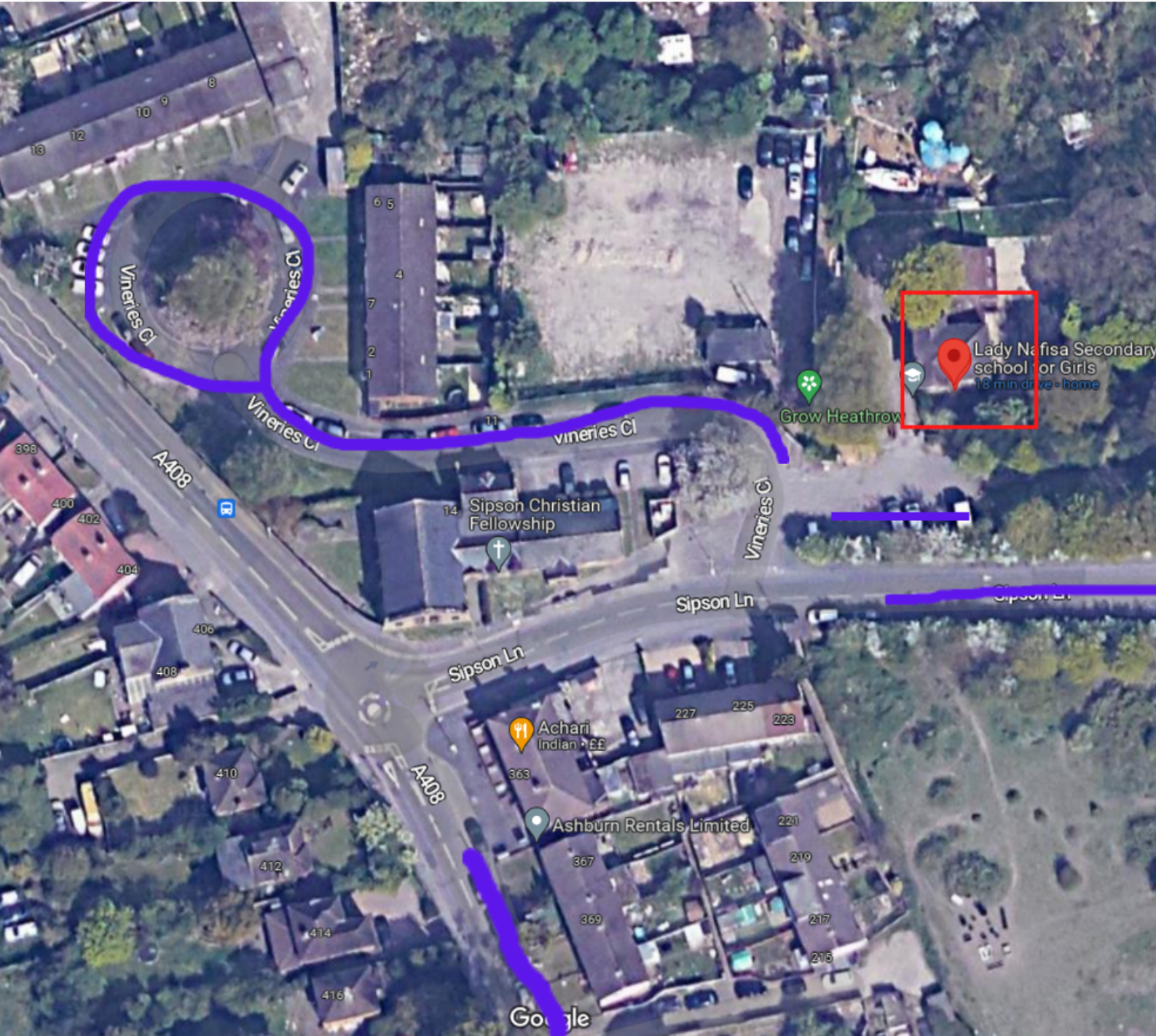
03

Park & Stride

The school has identified roads that do not have parking restrictions which parents can use to park and students can walk to school.

These are marked in purple on the map below.

We encourage students, especially from KS4, to park and stride to school.



04

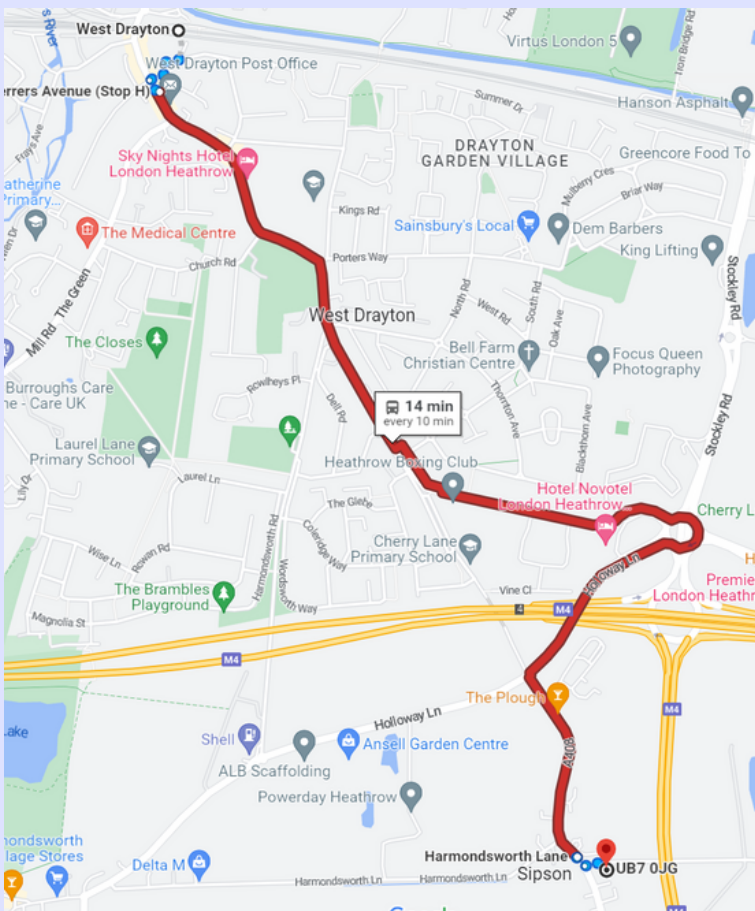
LOCAL BUS TIMETABLE

Harmondsworth Lane 222			
222 towards Uxbridge	Sipson close	3 min walk to school	Buses every 9- 12 min
222 towards Hounslow	Harmondsw orth Lane	1 min walk from school	Buses every 9- 12 min

05

Using the train

West Drayton railway station serves West Drayton and Yiewsley. It is served by local trains operated by the Elizabeth line. It runs from London Paddington and is situated between Hayes & Harlington to the east and Iver to the west. The station is managed by Transport for London (TfL).



The 222 bus takes 15 mins from the station to school.

The walking route takes 35 mins

It is situated in Fare Zone 6.

Children aged 11-15 can get free and discounted travel on all TfL transport services with a Zip Oyster photocard.

- Free travel on buses and trams
- Child rate pay as you go fares on Tube, DLR, London Overground, Elizabeth line (excluding between West Drayton and Reading) and IFS Cloud Cable Car

To apply for a Zip Oyster Card go to <https://tfl.gov.uk/fares/free-and-discounted-travel/11-15-zip-oyster-photocard>

06

Considerate and Safe Driving



When driving to bring or collect your daughter, please remember

Drive slowly and carefully on streets where there are likely to be pedestrians, cyclists and parked cars.

Hazard warning lights are not an excuse for dangerous or illegal parking.

It is safer for your passengers (especially children) to get out of the vehicle on the side next to the kerb.

Give clear signals in plenty of time, to advise other road users before changing course or direction, stopping or moving off.

Move off only when it is safe to do so. (Mirror – Signal – Manoeuvre). Be aware

Considerate and Safe Parking



If you are parking near to Lady Nafisa School

PLEASE DO NOT stop or park:

Near the school entrance;

At or near a bus stop;

On yellow lines during the times of operation or on double yellow lines at any time;

On a crossing or in the area covered by the zig-zag lines;

Opposite or within 10 metres (32 feet) of a junction;

Opposite a traffic island or another parked vehicle (where this would cause an obstruction);

Where the kerb has been lowered; In front of an entrance to a property;

On a bend;

Where you would obstruct cyclists' use of cycle facilities;

or In any other dangerous position where it causes unnecessary obstruction of the road.

Useful contact details



Hillingdon Council Transport

<https://www.hillingdon.gov.uk/transport>

Transport for London journey planner

<https://tfl.gov.uk/plan-a-journey/>

Transport for London Bus updates

<https://tfl.gov.uk/bus/status/>